



oleatex®

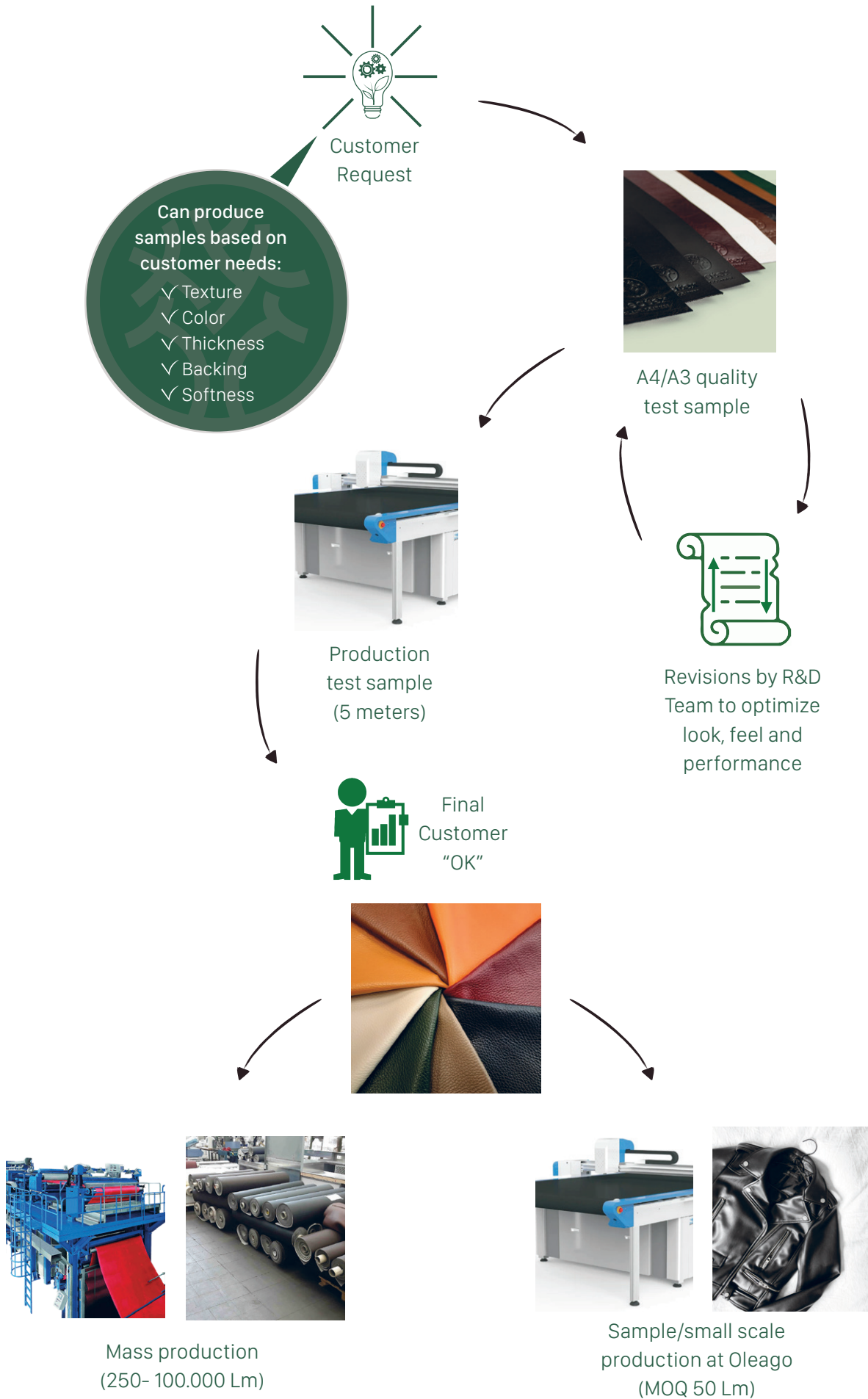
NEXT-GEN MATERIAL



DEMETER

OUR PLANET YOUR CHOICE

"TAILOR MADE" ORDERING PROCESS



DEMETER

DMT160



74%
RECYCLED & NATURAL CONTENT
26% PU

Total Thickness mm	0,60 ± 10% TS EN ISO 2286 - 3	Backing
Total Weight gr/m ²	300 ± 10% TS EN ISO 2286 - 2	100% REC PES
Backing Weight gr/m ²	135 ± 10% TS EN ISO 2286 - 2	Coating
Coating Weight gr/m ²	165 ± 10% TS EN ISO 2286 - 2	48% PU + 52% BIOTEX

DMT161



75%
RECYCLED & NATURAL CONTENT
25% PU

Total Thickness mm	0,65 ± 10% TS EN ISO 2286 - 3	Backing
Total Weight gr/m ²	300 ± 10% TS EN ISO 2286 - 2	100% COTTON
Backing Weight gr/m ²	145 ± 10% TS EN ISO 2286 - 2	Coating
Coating Weight gr/m ²	155 ± 10% TS EN ISO 2286 - 2	49% PU + 51% BIOTEX

DEMETER

DMT121



97%
RECYCLED & NATURAL CONTENT
3% PU

Total Thickness mm	0,65 ± 10%	TS EN ISO 2286 - 3	Backing
Total Weight gr/m ²	350 ± 10%	TS EN ISO 2286 - 2	95% REC PES + 5% ELASTANE
Backing Weight gr/m ²	200 ± 10%	TS EN ISO 2286 - 2	Coating
Coating Weight gr/m ²	150 ± 10%	TS EN ISO 2286 - 2	5% PU + 90% BIOTEX+ 5% PAA HG

DMT243

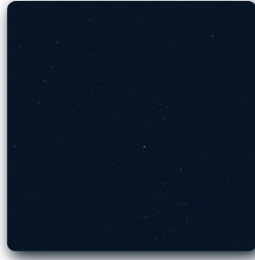


72%
RECYCLED & NATURAL CONTENT
28% PU

Total Thickness mm	0,65 ± 10%	TS EN ISO 2286 - 3	Backing
Total Weight gr/m ²	350 ± 10%	TS EN ISO 2286 - 2	100% REC PES
Backing Weight gr/m ²	130 ± 10%	TS EN ISO 2286 - 2	Coating
Coating Weight gr/m ²	220 ± 10%	TS EN ISO 2286 - 2	44% PU + 56% BIOTEX



Rainbow



Crinkle



Freya



Madrid



Glory



Reptilian



Imera



Bristol



Allegro



Olive

We created our recipe by taking advantage of the olive's miracle.



Pomace

The journey begins with grinding the olive pomace to an acceptable particle size



Solvent-Free

To protect nature and life, solvent haven't been used in the patented formula we developed.



Affordable

More budget-friendly compared to similar products in the market.



Recyclable

Created from plant- based waste and recycled materials. Oleatex itself can also be recycled!



Fashionable

Supporting all 3 criteria of The Fashion Pact, Oleatex can be produced in large quantities.



Resistant

As durable as real and artificial leather. In addition, requested performance features can also be added.



Eco-Friendly

Reducing carbon footprint more than six times, No water usage. All bio-wastes are locally sourced. The whole process takes place within a radius of 100 km



Coating

Depending on the application area, it can be applied at required thickness, pattern, and color.

DEMETER

ALTERNATIVE COLORS



8125



9054



2018



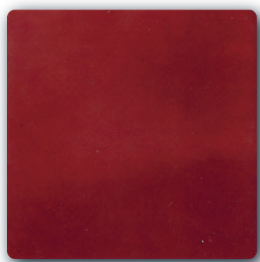
2010



1061



5268



3286



1138



4371

The suggested using areas; clothing

"The colors and patterns on the catalog are samples of the seasons please contact us for more."

UP TO
**90%
BIO**

**100%
RECYCLABLE**

**DECREASING
C(eq) EMISSIONS
UP TO 94%**

Sources: portal.higg.org - wboc.com - Calculated based von public data

AWARDS



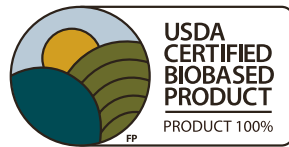
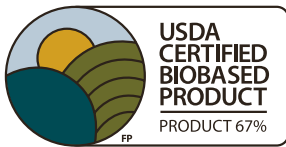
SUSTAINABILITY



BEST IN INNOVATION



CERTIFICATES



* This is the case for the backing fabric.



* This is the case for the backing fabric.



OLEAGO INC.

Turkey
Call us: +90 850 474 6690,
Serifali Mh. Miras Sk. No.49
34775 Umraniye, Istanbul
hello@oleago.com

Europe
Call us: +49 9132 729 98 556,
Anna-Herrmann-Str. 10 91074 Herzogenaurach,
Germany
hello@oleago.com

Switzerland
Tödistrasse 83, 8800 Thalwil, Switzerland
General, Sales & PR Inquiries:
hello@oleago.com

South Africa
Call us: +27 68 650 2002,
4 Forest Hill Oranjezicht Cape Town 8010
hello@oleago.com

Sales & Whatsapp
+90 549 120 2099

UK
Call us: +44 20 8540 8547,
Mobile +44 74 9690 1706,
41 Rothesay Avenue, Wimbledon Chase,
SW20 8JU London, United Kingdom
hello@oleago.com

Bangladesh
Call us: 880 171 263 4329,
House # 20 (Flat 6A), Road # 3/F, Sector # 9, Uttara,
Dhaka-1230, Bangladesh
hello@oleago.com

Japan
Call us: +81 70 1317 9551
La Tour Shinjuku 6-15-1 No: 2314
Nishi-Shinjuku 160-0023 Shinjuku/Tokyo
General, Sales & PR Inquiries:
hello@oleago.com

